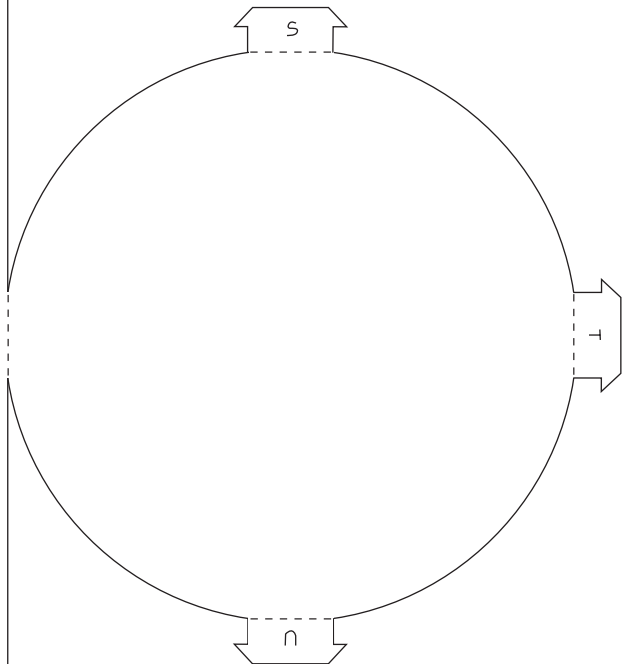
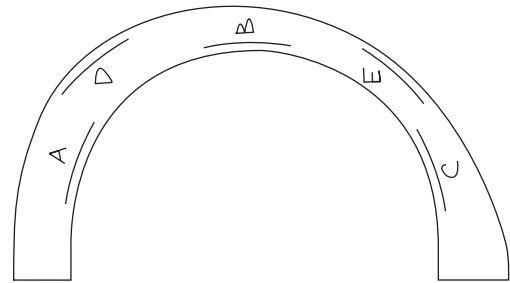
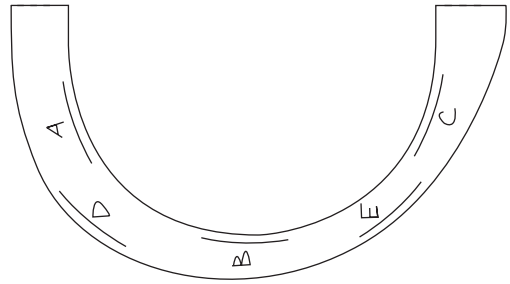
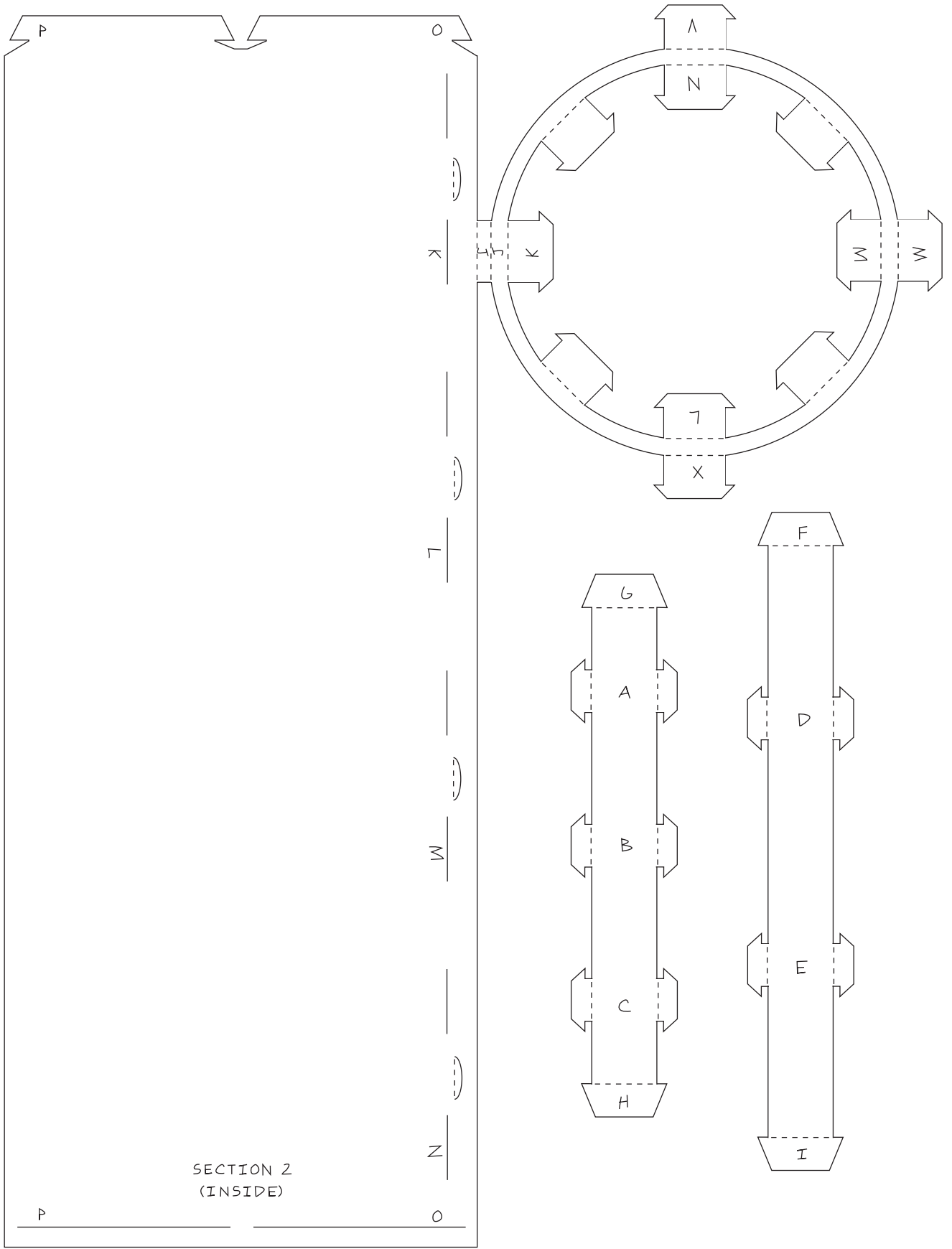
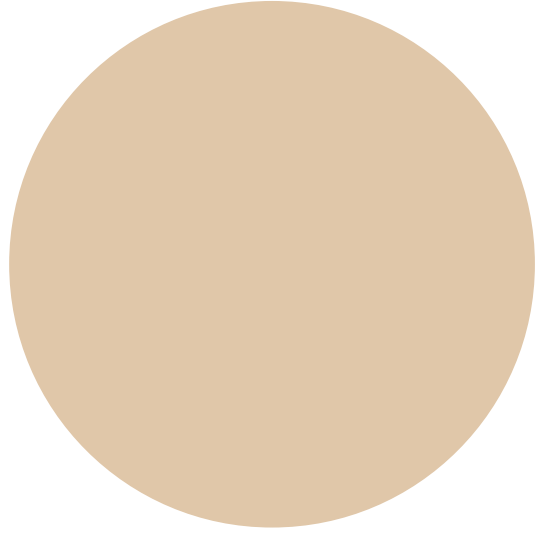
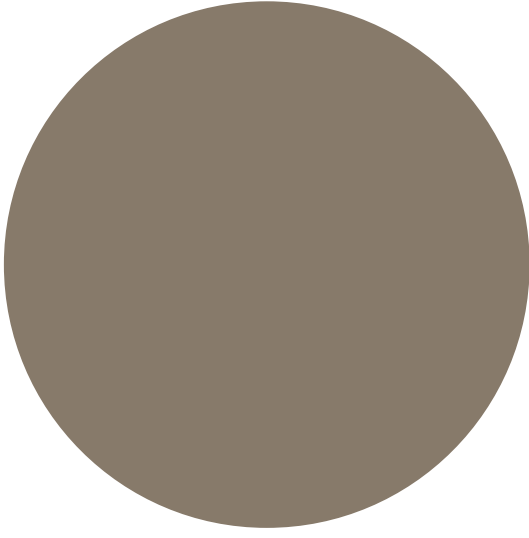
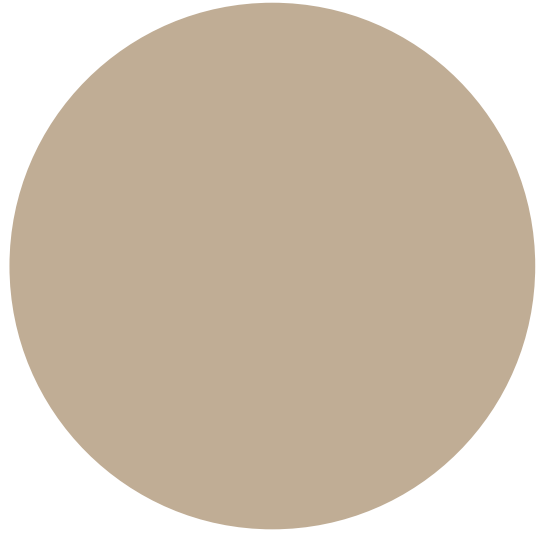
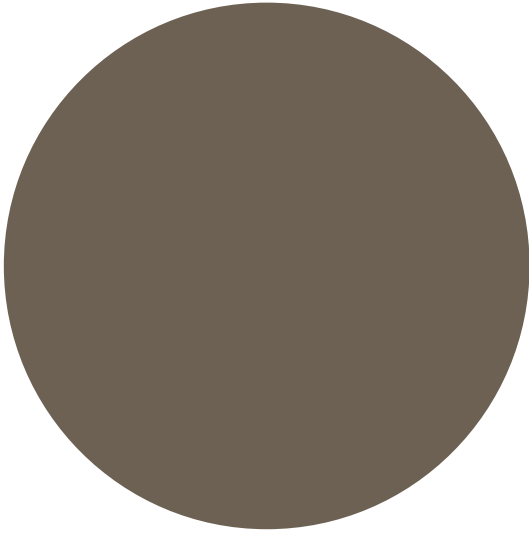
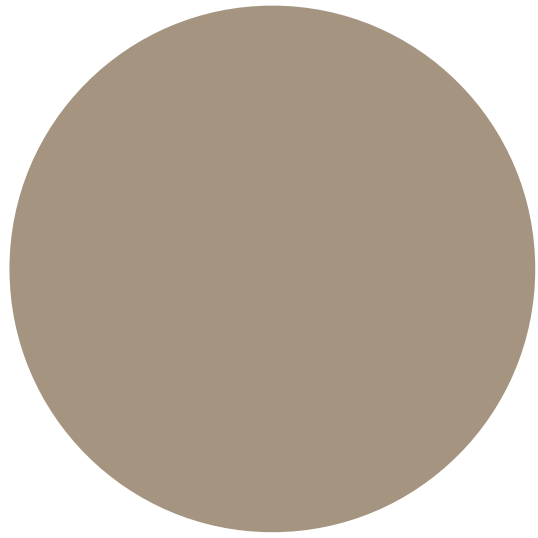
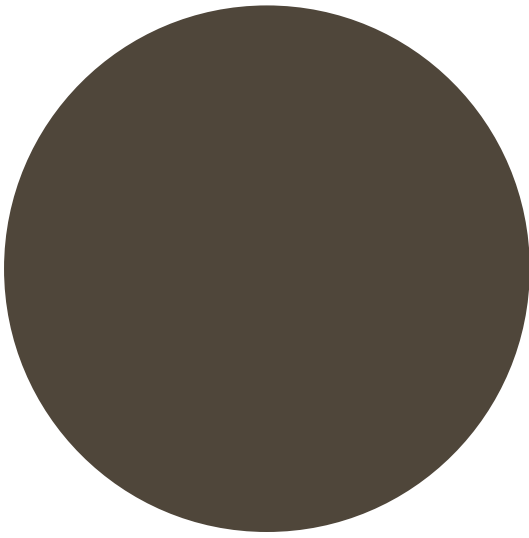


SECTION 1
(INSIDE)







Follow these simple instructions to make your three-dimensional coffee mug:

1. Cut out all of the pieces on the solid black lines (including all of the solid lines within sections 1 and 2) with an Exacto blade. Score all the dotted lines for folding.
2. Construct the mug in alphabetical order. Note that the mug is not only 3-D, but it also has volume. Keep this in mind as you construct the coffee mug handle.
3. Begin the coffee mug handle (A-E) by folding the tabs on the dotted lines and inserting the tabs into their corresponding slots. The letters will go on the inside of the handle so that they do not show on the outside of the completed handle.
4. Insert the completed handle through the outside of section 1 into slots F-I.
5. Begin constructing section 2 with the rim of the cup (J-N). Fold J onto itself, fold the rim back, and insert tabs K-N through their corresponding slots on the inside of section 2. Tuck O and P tabs into their slots.
6. Complete the mug by folding and inserting the tabs on section 1 into their corresponding slots through the outside of the mug. Place section 2 inside section 1 and fold and insert tabs X-V through their corresponding slots on the outside of section 1.
7. Finally cut the circles on the back of this page and place your favorite coffee flavor into your new mug.